

February 2023

Sizewell C Update

Leiston-cum-Sizewell Town Council

7 February 2023

- 
1. **2022 Re-cap**
 2. **Community Pledges**
 3. **What's Next**
 4. **Q&A**

Sizewell C A Brief Recap



2022 'Accelerating' Sizewell C



- **January**
Government announces £100m to support Sizewell C
- **March**
Financing legislation comes into effect
- **April**
Energy strategy launches Great British Nuclear
- **July**
DCO approved
- **August**
Early Works onsite
- **September**
£700m earmarked for Sizewell C
- **November**
Autumn Statement announcement
Government Investment Decision

Our Community Pledges

Minimise disruption to local communities during the construction of Sizewell C

Invest in local employment, education and skills. This includes an aim to enable 1,500 apprenticeships.

Support the growth of the local economy. This includes measures to support local firms in gaining work on the project.

Transport the majority of construction materials by rail and sea, significantly reducing the number of Sizewell C HGVs on local roads.

Respect the Suffolk Heritage Coast and minimise impact on RSPB Minsmere, National Trust Dunwich Heath and Leiston Abbey.

Return the temporary construction area to a standard befitting the Area of Outstanding Natural Beauty (AONB) following construction.

Remove the accommodation campus and caravan site, the park and ride sites, the rail extension of the Saxmundham to Leiston branch line and freight management facility following construction and restore the land.

Support the Suffolk coast tourism sector to offset impacts from construction through the provision of a Tourism Fund.

Provide a comprehensive 24/7 onsite occupational health service for workers, a healthcare contribution and a Public Services Contingency Fund.

Require all workers to sign a Worker Code of Conduct and enforce it – as we have done successfully at Hinkley Point C.

Enhance the economic, social and environmental wellbeing of local communities through the provision of a Community Fund.

Minimising Disruption

- **Noise Mitigation Programme**
- **Project Scheduling: Getting some approved advance works completed early**
- **Project Scheduling: Building associated development first – ‘early works’**
- **Pre-construction planning: Establishing community groups before DCO ‘triggered’**
- **Community Freephone, Email and Sizewell C Information Office**
- **Leiston Traffic and transport working group: mitigations being finalised – link to Town’s regeneration**



Investing in Local Employment, Education and Skills

- New Employment and Training Prospectus
- MoU signed with the last Suffolk FE College
- University of Suffolk: Senior Leadership Induction
- Sizewell C Community Day
- Third Sector Partners and Young Sizewell C



Supporting the Growth of the Local Economy

- Over 2,000 businesses from Suffolk and Norfolk now on the Supply Chain Portal.
- Sizewell C events have taken place in all six counties in East of England.
- Meet the Buyer in Ipswich.
- Over £10million in contracts for early works with East Anglian companies.



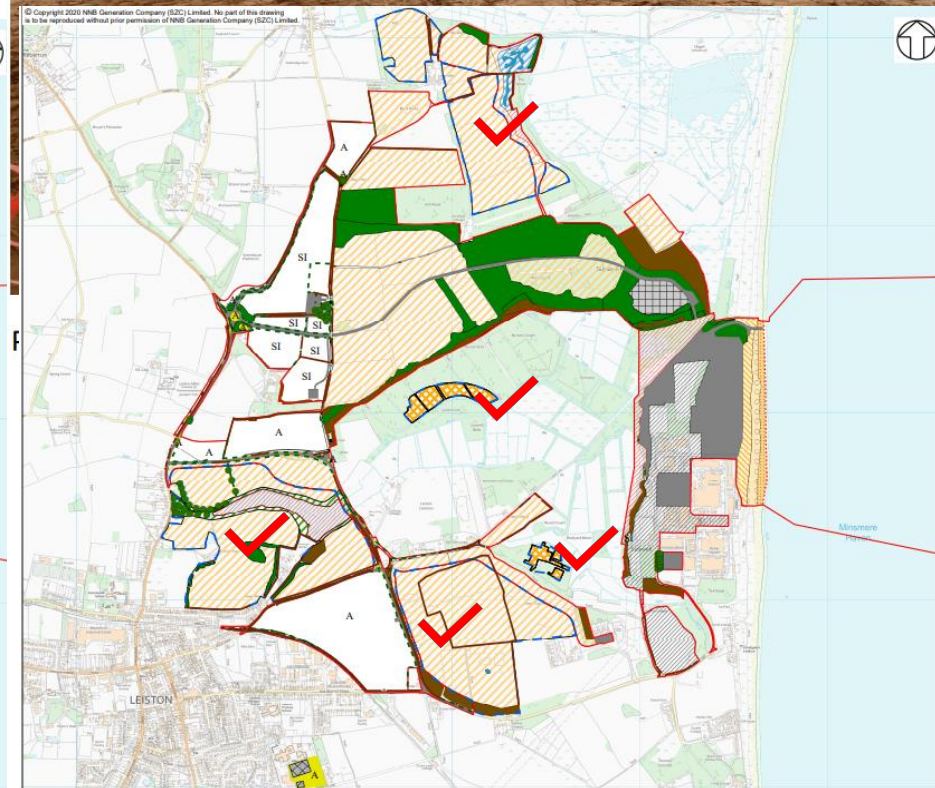
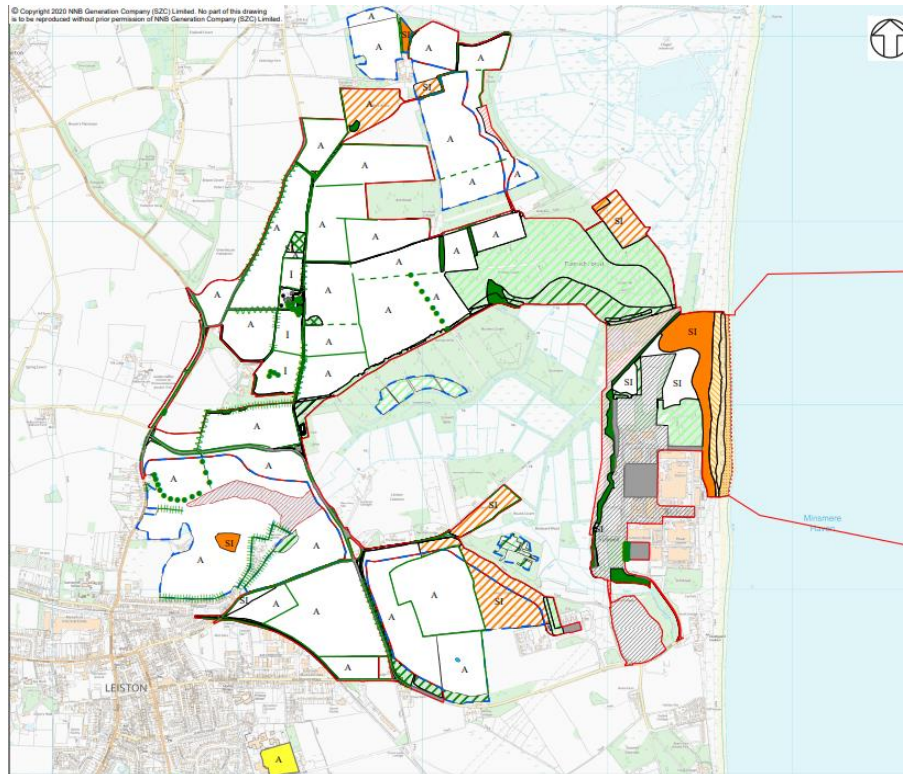
Transport the Majority of Freight by Rail and Sea

- Declaration of Intent signed with Associated British Ports
- Confirmed 60 – 40 approach in approved DCO
- Train trial
- Logistics Planning



Respecting the Heritage Coast and Return to AONB

- Ongoing engagement with neighbours and partners
- Deed of Obligation: £100million Environment Fund confirmed
- Independent Environmental Trust to be established
- Early delivery of compensatory Marsh Harrier Habitat

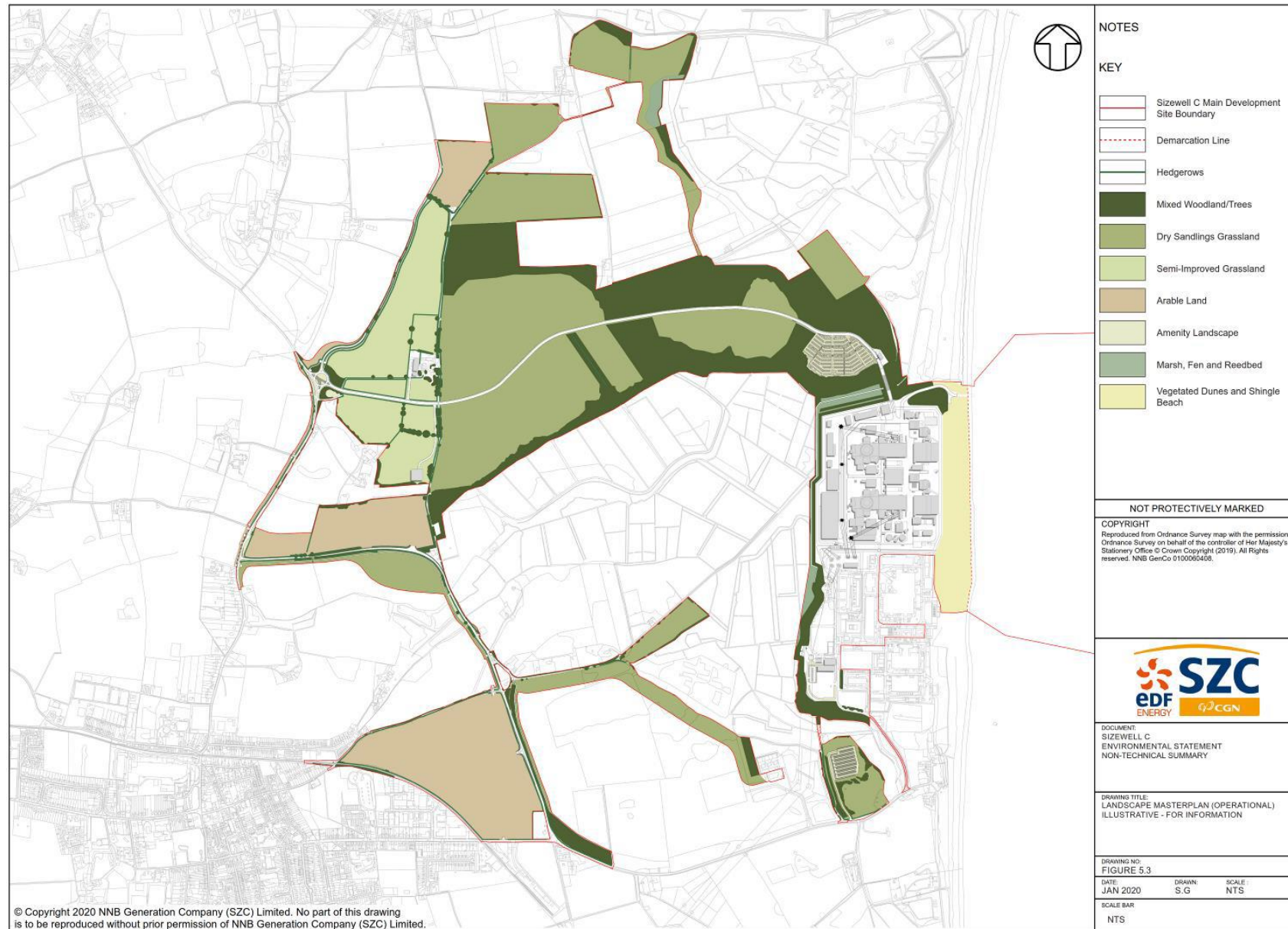


NOTES

KEY

- SIZEWELL C MAIN DEVELOPMENT SITE BOUNDARY
- - - - DEMARCATION LINE
- OFFSITE AREAS
- EXCLUDED AREA - SIZEWELL B
- EXCLUDED AREA - SSSI OR SSSI MITIGATION
- TREES
- CREATED SPECIES RICH HEDGE WITH TREES
- RETAINED HEDGE
- AMENITY GRASSLAND
- ARABLE
- BAREGROUND
- CAR PARK
- DRY SANDLINGS GRASSLAND
- HARDSTANDING
- NEUTRAL GRASSLAND
- OPEN WATER
- REEDBED
- RETAINED WOODLAND
- RETAINED WOODY SCRUB
- SANDY FORESHORE
- SPECIES POOR SEMI-IMPROVED GRASSLAND
- SPORTS PITCH
- VEGETATED DUNES
- VEGETATED SHINGLE
- WOODLAND PLANTING
- WOODY SCRUB
- REPTILE RECEPTOR AREA - ACID GRASSLAND

Return the Construction Site back to AONB



Support for Tourism and Public Sectors

- Total £250million
- £12million for Tourism
- £23million for Community Fund
- Agreements in place with blue light services and a public services contingency fund
- National Trust, RSPB and Leiston Abbey

Deed of Obligation

Resourcing of local authorities	Accommodation and Housing	Emergency Services	Health and Wellbeing	Public Services and Community Safety
Natural Environment	Employment and skills	Tourism	Noise	
Heritage	Transport	Community Fund	Leisure and Amenity	

Looking ahead

2023

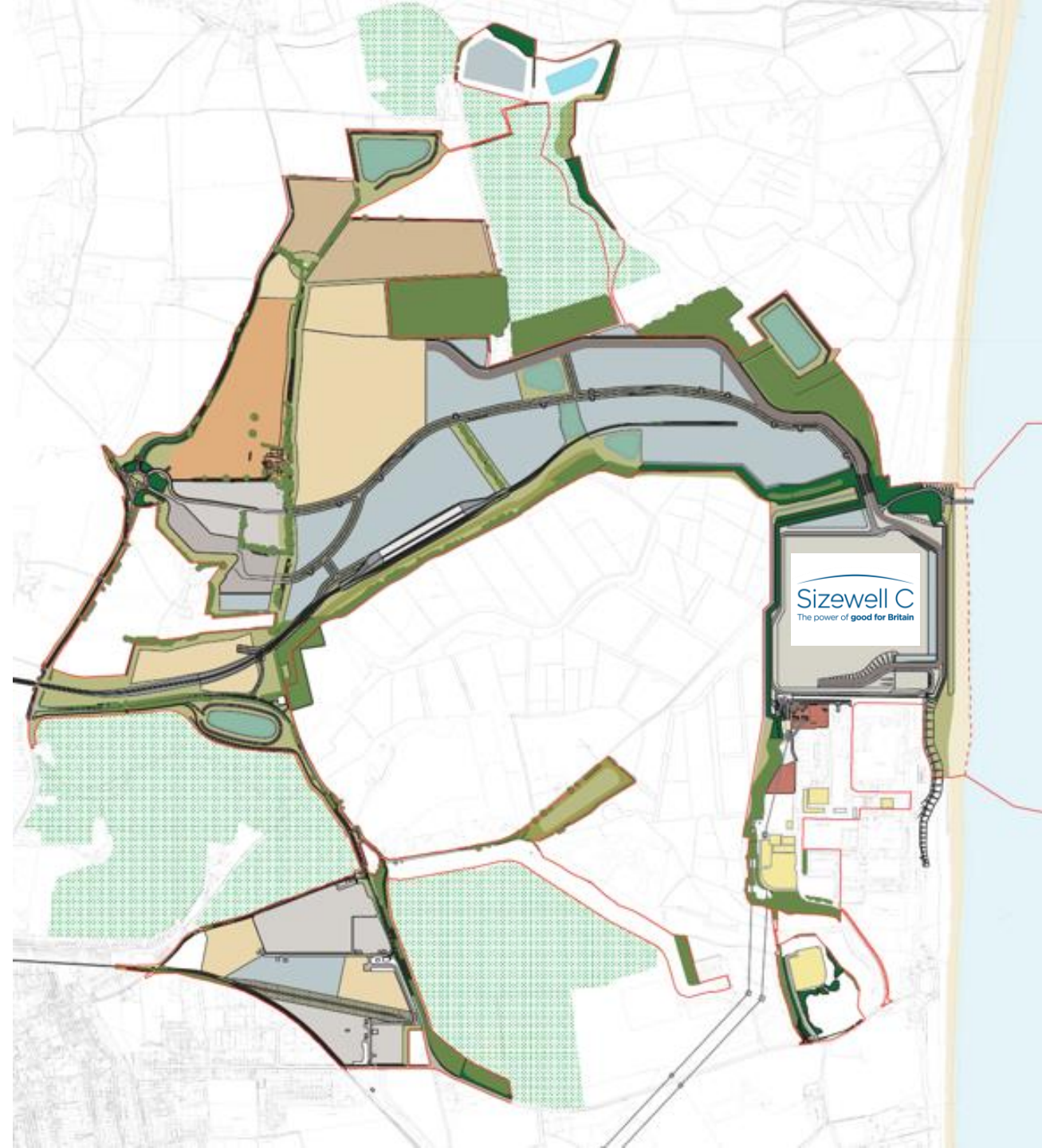
- Advance works on site / Marsh Harrier site complete
- Community Newsletter – 12th Community Pledge
- Final Investment Decision
- Establishing Community involvement in Project Governance

10-12 Years

- Construction
- Early years: Traffic mitigations and Leiston 'streetscape'
- Associated Development and Site Preparation

2028

- Peak construction

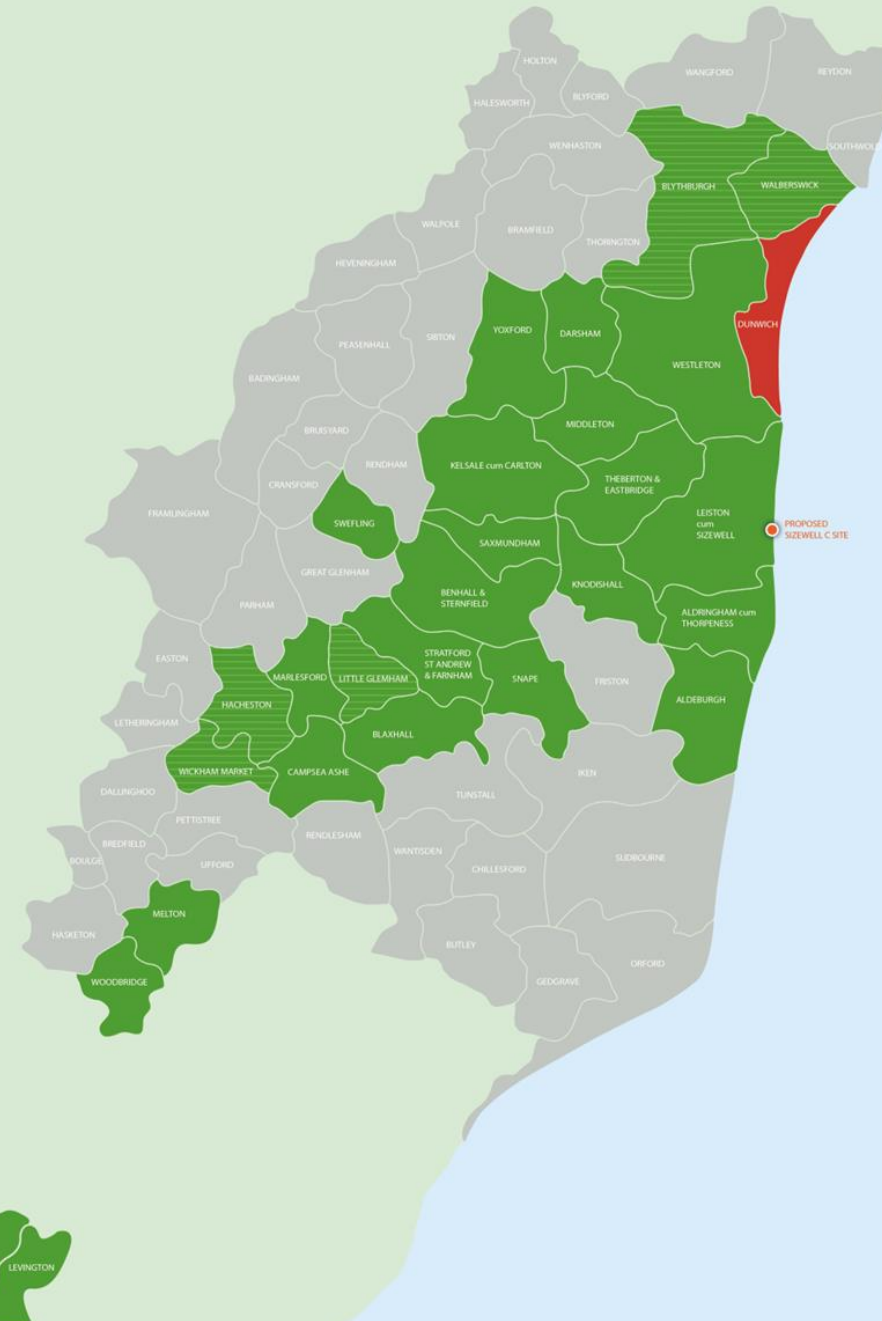


Parishes: Pre-FID Engagement Round 2

- In 2022 meetings took place with parishes to provide a re-cap of the Sizewell C proposals and introduce the Deed of Obligation.
- A commitment was made to follow up with a second round of engagement with these parishes so we can present the construction plan and what it means for each parish – particularly in the early years of construction.
- When the Community Relations Team has settled in and in advance of FID, Round 2 will begin.

■	Approached for meeting
■	Confirmed meeting
■	Meeting completed
■	Engaging through transport working groups
■	Approached for meeting but unresponsive

Parish	Date
Blaxhall	2 March
Leiston	7 March
Yoxford	23 March
Woodbridge	29 March
Knodishall	29 March
Saxmundham	6 April
Farnham	11 April
Levington	12 April
Melton	13 April
Westleton	25 April
Snape	26 April
Kelsale cum Carlton	27 April
Campsea Ashe	10 May
Nacton	11 May
Theberton and Eastbridge	12 May
Aldeburgh	23 May
Benhall	27 June
Snape	28 June
Marlesford	4 July
Darsham	12 July
Aldringham cum Thorpeness	25 July
Middleton	25 July
Wickham Market	1 August
Sweffling	13 September



Leiston: Some Thoughts

- Establish an agreed vision with local partners.
- Keep a constructive and solid relationship with SZC Co.
- Have ambition and focus on the ***combined opportunities***.
- Work with East Suffolk and the County but let them know who knows.
- Negotiate and represent your Town with pride: it has a richer and more important history, a more dynamic present and a far more glowing future than it is given credit for.
- Move beyond – and never accept - the Guy McGregor point of view.

‘Don’t be afraid’

Thank you

Q&A